



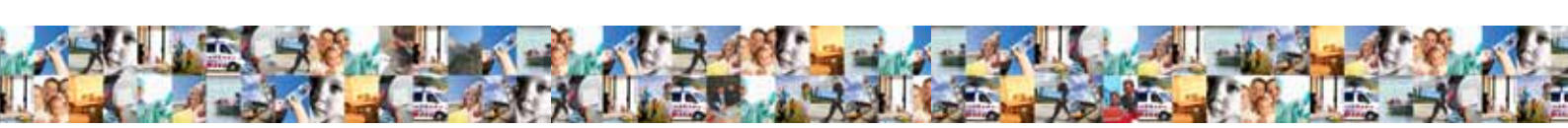
National  
Australia's Best



THE  
M...  
A...

DRIVEWAY BANK





## Chapter 8: Building stronger neighbourhoods & communities

*“2009 was for many a year of challenge and struggle, yet Victorians displayed great courage, generosity of spirit, great determination and great mateship, and we know that this strong community spirit will serve us very well into the future.”*

JOHN BRUMBY, PREMIER OF VICTORIA

### BUILDING ACTIVE COMMUNITIES

Victoria is recognised as one of the most liveable places in the world. It has strong, well planned communities, an enviable quality of life and a vibrant multicultural society. Labor will build on these strengths and support the growth of our population through good planning, strong local government and an active housing sector.

Our community is where we live, where we meet our neighbours, where we play sport and send our children to school. It's the place where we are connected to the wider world. And if things go wrong, it's where we want to be able to find the help we need. Labor believes that by making local communities strong and supportive places we can greatly improve the lives of all Victorians.

That's why Labor will build the infrastructure communities need: halls, theatres, sporting clubs and neighbourhood houses. These are the places where people come together; the places where a community's history is built and its stories told.

A strong community is a well connected one, and so Labor will improve public transport in Victoria and make sure it serves the needs of all communities. Labor believes in planning for the growth of Victoria in such a way that transport and other infrastructure needs are taken into account as new communities spring up around our State. Labor also believes in improving and increasing the stock of public and social housing in Victoria, because a secure place to live is vital to all Victorians. We will also take measures to increase home ownership.

Victorians want to live in communities that are vibrant and engaging. Towns and neighbourhoods thrive when residents are involved and live in safe, active and healthy communities. Building resilient communities is about improving the social, economic and environmental health of the community and helping communities to be better equipped to deal with challenges in the future.

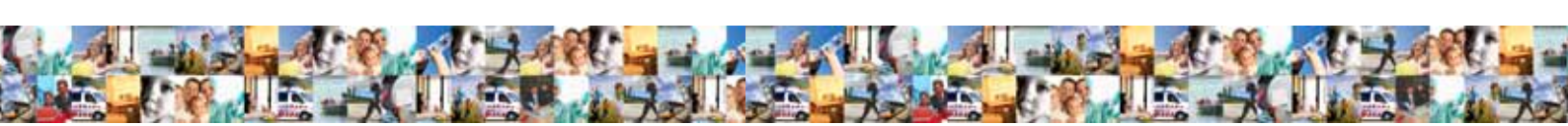
Community organisations play a key role in delivering vital services, providing opportunities for people to come together.

Labor established the Office for the Community Sector because we recognise the important role of not for profit organisations in building stronger communities. We see the value of working in partnership with community organisations who are on the ground, and who know the needs of their own particular place. Labor believes in supporting enterprises set up by community organisations in order to further their missions, create job opportunities and extend their revenue base.

The Office for the Community Sector has been working to reduce the administrative burden on not-for-profit and community organisations and building their sustainability so they can continue to contribute to the economic and social life of Victoria.

We value the work of the countless volunteers who give of their time and energy to serve their fellow Victorians, and we will work to recognise that contribution, and encourage more Victorians to volunteer.

Labor believes that sport can play a positive role in strengthening local communities. Children can get fit and have fun on the sporting field, meet new friends and learn to interact with one another. Many lasting friendships are formed between families whose children meet this way. That's why Labor will encourage sport at every level in Victoria.



Labor believes in strong and transparent local government. The services provided by local governments are vital to Victorians, and we will work to support councils in managing their finances and serving their communities.

## **COMMUNITY BUILDING COMMUNITY FACILITIES**

### **8.1 Labor will fund community facilities such as community centres, meeting rooms, libraries and sports centres which allow people to get together, get involved in local groups, education classes, sport, or provide a hand to someone in need.**

Labor will invest in local community infrastructure to build strong communities where:

- People have a sense of belonging and a sense of ‘community spirit’;
- People work together for a common objective, and
- There is a high level of social and economic participation.

Labor will make it easier for local government and community groups to combine funding to build multi-purpose centres which include a range of facilities and programs and which are accessible to a wide range of groups and individuals.

## **BUILDING COHESIVE & SUSTAINABLE COMMUNITIES**

### **8.2 Labor will strengthen local communities by renewing physical and social infrastructure. Local people need to be involved in decisions and activities that help improve the liveability of their local communities and neighbourhoods.**

Labor will support communities that are struggling by investing in neighbourhood regeneration programs to bring residents, local groups, businesses and government together to agree on priorities, develop local plans and maximise opportunities for community and economic development.

Specifically Labor will:

- Expand the Neighbourhood Renewal and Community Renewal programs into areas of Victoria experiencing economic hardship;
- Ensure that capital investment programs will create employment opportunities for public and social housing tenants, and
- Support small rural communities to help them invigorate their towns and ensure their communities are strong and able to face the challenges of the future.

## **A PARTNERSHIP WITH COMMUNITY ORGANISATIONS**

### **8.3 Labor will strengthen partnerships with community and non-government organisations through the *Stronger Communities Action Plan*.**

Labor will:

- Support advocacy as a legitimate role for community organisations;
- Encourage participation in service planning by all members and organisations in the community to ensure diverse needs are met;



- Provide support to the Queen Victoria Women’s Centre so it can foster partnerships to strengthen communities;
- Support research and evaluation into the effectiveness of programs and services, and
- Cut red tape to promote innovation and community owned enterprires.



Source: Office of Housing; Summary of housing assistance; projection from State Budget 2010/11, Budget Paper 3

## NEIGHBOURHOOD HOUSES

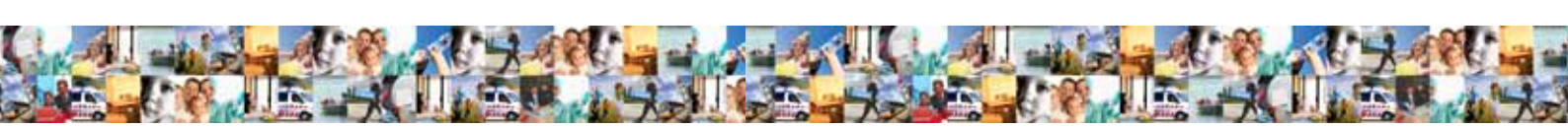
### 8.4 Labor will invest in neighbourhood houses as a key local community resource and as centres for building social capital and community networks.

Neighbourhood houses deliver important grass roots programs that strengthen local communities and provide support and services.

Labor will ensure ongoing support for Victoria’s neighbourhood house network, including boosting services, modernising information and communications technology, and establishing new neighbourhood houses where they are most needed in our suburbs and towns.

Specifically Labor will:

- Support the involvement of neighbourhood houses in local area planning;
- Encourage greater collaboration and sharing of resources with other local services;
- Strengthen their role in skills development and re-training initiatives, and
- Promote community hub-style centres combining local services such as childcare, sporting facilities, libraries and community office space for local voluntary groups.



## COMMUNITY SUPPORT GRANTS

### **8.5 Labor will provide grants for community strengthening and infrastructure to ensure that people from all walks of life are able to get involved in community activities across Victoria, creating strong, inclusive and connected places to live.**

Participation in the social life of the community is an important part of creating and maintaining social cohesion and wellbeing for all. Labor will work with communities to identify their needs and promote inclusive activities and multi-use facilities.

Since 2004 Labor has contributed over \$97 million to over 570 projects around Victoria, such as new community hubs, local hall upgrades and community plans, that have made a real difference to our communities.

## COMMUNITY ENTERPRISE

### **8.6 Labor will support community groups to establish businesses that further their organisational missions.**

Community enterprises provide opportunities for social and economic participation and potential new sources of revenue. Labor has pioneered support for enterprise development during the past five years, including grants and support for small NGOs and establishing the new community enterprise development agency, Social Traders, which is funded in partnership with a private benefactor.

Labor will further its strategic development of the community enterprise sector, including:

- Research into the social and economic contribution of the sector;
- Work with Social Traders on financing options for the establishment and expansion of community enterprises, and
- Expand the advice available to community groups from professionals with a business background to help with market research, business opportunities and financial viability.

## CONNECTING PEOPLE

### **8.7 Labor will work with local government, schools, and public and private transport operators to develop innovative transport options in areas with low numbers of passengers to ensure that rural and outer suburban communities remain connected.**

Through the *Transport Connections* program, communities can ensure they get the best match of local needs with transport resources (such as public transport, community, school and private buses, and taxi services) to give people access to employment, health and community services and social opportunities.

Labor has worked with local communities in 32 outer suburban and regional areas to develop 650 innovative transport services which are used by more than 62,000 people.



## DIGITAL INCLUSION

### **8.8 Labor recognises that ‘digital literacy’ is an increasingly important skill required to find and use information, conduct business, deal with companies and government agencies and stay in touch with others.**

Labor understands that some people struggle with information and communications technology, particularly as these are changing rapidly.

Building on our successful digital inclusion strategy, Labor will provide grants and training programs to enable people to gain access to the internet, learn necessary computer and ICT skills and to make use of on-line resources and information.

## MANAGING GROWTH

### GROWTH & LIVEABILITY

### **8.9 Labor will implement the long term strategies in Melbourne @ 5 million, to provide for the sustainable growth of Melbourne and retention of its reputation as one of the most liveable cities in the world.**

The cornerstones of Labor’s planning and urban development approach are Activity Centres, Central Activities Districts and employment corridors, housing diversity, Green Wedges, the Urban Growth Boundary and improved public transport.

Labor will:

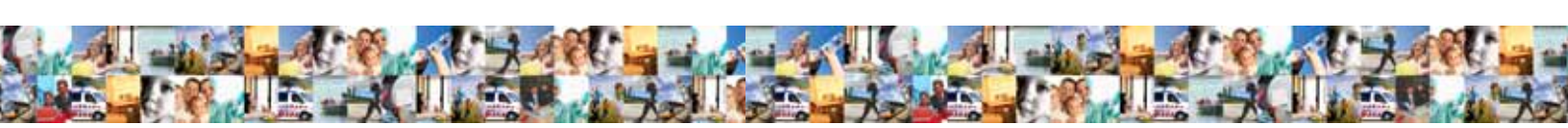
- Ensure that urban design and architectural standards are further entrenched in Victoria’s planning system;
- Closely align transport and urban development strategies to maximise transport choice;
- Identify strategic locations for the development of high and medium density housing and relocate Government services into major activity centres;
- Cater for future required capacity for retail, commercial, educational, health, recreational and residential uses in designated areas;
- Focus on urban renewal projects, including housing, to improve services and local amenity;
- Ensure designated Activity Centres are appropriate in scale and preserve heritage buildings and structures;
- Protect and enhance Melbourne’s Green Wedges, and
- Ensure that an appropriate level of land supply is made available for new housing development.

## IMPROVED PLANNING IN REGIONAL & RURAL VICTORIA

### **8.10 Labor will work with local government to plan growth of regional and rural towns and adopt appropriate planning rules in each area that protect natural resources and the use of rural land for agriculture and rural pursuits.**

Labor will:

- Assist local Councils to prepare strategic plans for regional and rural cities and towns to accommodate likely future growth in a planned fashion;



- Provide resources to rural and urban interface Councils to examine development pressures such as lot size, the protection of existing townships and establishment of new uses in rural areas outside urban growth boundaries;
- Recognise the importance of heritage values in small rural towns and protect these townships from inappropriate developments;
- Recognise the linkage between maintaining environmental values and tourism potential in rural land and key regional centres;
- Work with Councils in relation to discretionary uses and where appropriate increase prohibited uses in zones in rural areas, and
- Identify and preserve appropriate areas for intensive animal husbandry and crop-raising.

## **PLANNING FOR SUSTAINABLE GROWTH**

### **8.11 Labor is committed to taking action on climate change, but even the most ambitious global efforts cannot prevent a significant amount of global warming which is already built into our climate due to historical emissions.**

As a result we need to plan for the impacts, to ensure that our communities are resilient in the face of change.

Labor will:

- Provide information and education to local communities to help them understand how climate change will impact their area, and give practical advice on how to prepare;
- Support communities to develop local plans for protecting the most vulnerable groups in the event of extreme weather events such as heat waves and floods;
- Support communities to identify critical infrastructure at risk from the effects of climate change, and to develop plans to adjust, and
- Support local Landcare and Climate Community groups to adapt local environments to survive the effects of climate change.

## **INTEGRATING LAND USE & TRANSPORT PLANNING**

### **8.12 Labor is committed to planning for sustainability and affordability; maintaining what makes Melbourne so popular, and sharing the economic benefits that growth brings to Victoria.**

Accordingly, Labor will take an integrated, long-term approach to urban planning for land use, water, energy and transport planning, ensuring infrastructure and essential services will be ready as communities grow.

Labor will adopt a consistent approach to planning & transport to ensure:

- Strategic urban amenity and mobility decisions creating more liveable and sustainable communities;
- Priority for more sustainable and efficient transport modes;
- Consideration of water needs and sustainability of developments, and
- Urban amenity and mobility goals are met in all green-field and infill developments.



## PROTECTING MELBOURNE'S ESTABLISHED SUBURBS

### 8.13 Labor will protect the local character of Melbourne's suburbs by carefully planning future housing developments and activity centres.

Labor will:

- Work closely with local government, the housing and development sector and local communities so medium density expansion is achieved sensitively and housing diversity is increased;
- Protect local amenity and streetscapes and make sure development proposals improve and protect urban character and amenity;
- Ensure in-fill development sites are chosen taking into account factors including local heritage, the environment, amenity and affordability, and
- Give communities a greater voice by strengthening planning schemes to make local government more accountable.

## MELBOURNE'S GROWING SUBURBS

### 8.14 Labor recognises the special needs of the nine "interface councils" surrounding Melbourne, and will give further support for essential infrastructure that will be delivered at the right time to support growth.

Labor will further support the unique challenges faced by interface councils and their communities – particularly in the area of improved roads, extension of public transport services, social facilities and economic infrastructure. Communities on the outside edge of Melbourne will be given an opportunity to attract economic development through better infrastructure.

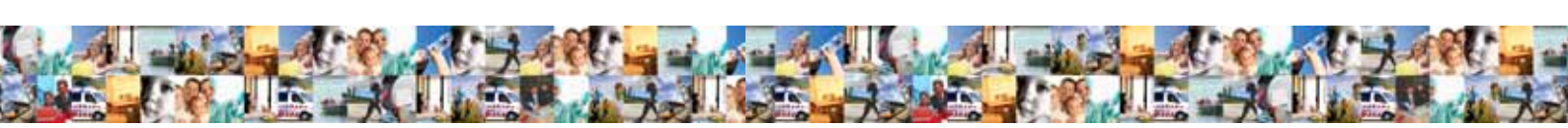
The Growth Areas Authority will work with councils, communities and developers to make sure the strategic release of land in Melbourne's five growth corridors is coordinated and infrastructure and the windfall gains from rezoning are captured to fund services to new communities and deliver them when needed.

## COASTAL PLANNING

### 8.15 Labor will balance environmental values, employment and tourism to integrate its planning in coastal towns and along the coastline.

Labor will:

- Sensitively and strategically manage current and future development within vulnerable areas of the coast;
- Manage settlement growth and development by establishing liveable and sustainable coastal communities;
- Ensure that the non-urban, 'green space' areas between coastal townships are protected;
- Provide stronger protection for the environmental values of coastal areas;
- Protect coastal public land and control development of private coastal hinterland;
- Ensure protection of land to the high water mark and any adjacent marine environments and maintain public access to coastal foreshore areas, and
- Implement strategies to adapt to the future impacts of climate change.



## **BALANCED PLANNING**

### **8.16 Labor will ensure the planning system balances social, environmental, cultural and economic opportunities and gives individuals and communities greater certainty and influence over decisions that affect them.**

Labor will:

- Keep appeal rights of local residents as an important element of planning in Victoria while maintaining appropriate Ministerial call-in power guidelines, and
- Take a whole of government approach to land use planning by incorporating transport, health, education, employment, community and recreational needs as well as infrastructure and service needs into the planning process.

## **STRENGTHENING VCAT**

### **8.17 Labor strongly supports the independence of VCAT (Victorian Civil and Administrative Tribunal) and will support it to improve the handling of all matters, including planning matters, in a fair and timely manner providing procedural fairness.**

VCAT is an integral part of the Government's commitment to appropriate dispute resolution. It will work to improve the experience of all VCAT users including those involved in planning matters.

Labor will:

- Act on recommendations following a review of VCAT to improve its processes and make them more user friendly, efficient and accessible;
- Promote further measures that encourage early and appropriate forms of dispute resolution in all jurisdictions, including VCAT, and
- Promote measures that make VCAT processes accessible and understandable, and which assist parties in making representations before the Tribunal.

## **A PLANNING SYSTEM WITH ENVIRONMENTAL SAFEGUARDS**

### **8.18 Labor will ensure the planning system gives sufficient regard to sustainable development and the protection of our natural environment.**

Labor will:

- Improve decision guidelines to provide increased control over development in environmentally sensitive areas;
- Promote sustainability as a framework for government policy and decision making, particularly regarding water and energy use;
- Develop and promote environmentally sustainable design principles and include them in the planning provisions, and
- Support local government in the development and implementation of local environmental and conservation strategies.



# LOCAL GOVERNMENT

## A STRONG LOCAL GOVERNMENT SECTOR

### **8.19 Labor will promote local government as an equal partner and provide Councils with support, autonomy and independence.**

Labor will:

- Respect local government as a distinct and essential tier of government made up of democratically elected Councillors who are responsible and accountable to their local communities;
- Work with local government to ensure Councils have the powers and capacity to respond to the needs and priorities of local communities, and
- Build a strong, accountable and transparent local government sector that is responsive to its local community.

## IMPROVED LOCAL GOVERNANCE

### **8.20 Labor will further strengthen the governance arrangements of local government, to ensure accountability and transparency.**

Labor will:

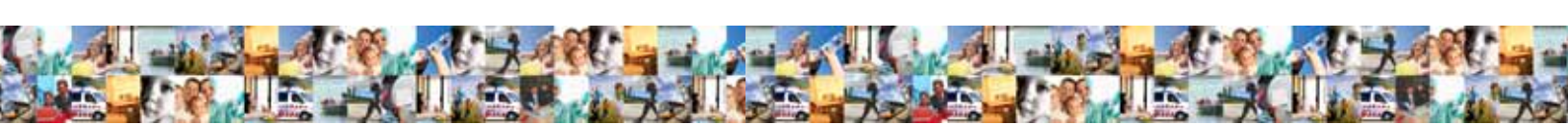
- Provide training for Councillors and staff in governance, accountability, conflict of interest, infrastructure asset management and land use planning legislation;
- Ensure Councillors are accountable for their conduct and that complaints can be properly investigated by a properly resourced Inspectorate, and
- Set an effective benchmarking regime for local governments and have performance assessment overseen by the Essential Services Commission.

## FINANCIAL INDEPENDENCE

### **8.21 Labor will support local government to independently manage its finances and set rates within the framework of community requirements and expectations.**

Labor will:

- Pursue a more equitable share of national taxation revenue for local government;
- Monitor all local governments to ensure they are financially viable, taking account of the unique social and economic pressures on smaller rural councils;
- Support the Councils Reforming Business initiative to help Councils implement reforms to become more efficient, and
- Ensure that the impact of decisions by other levels of government take into account the impact of costs on local service delivery.



## QUALITY SERVICE DELIVERY

### **8.22 Labor will ensure local government provides quality services with full accountability to the community.**

Labor will:

- Make sure new infrastructure is appropriate for the community's needs and existing roads, buildings and other assets are maintained for use by future generations;
- Encourage the strengthening of regional associations of councils to address common problems such as land use planning, housing and infrastructure services, and
- Support the delivery of services through the development of partnerships between State and local Government agencies and appropriate community based groups.

## HOUSING

Labor acknowledges the responsibility and moral obligation of governments to make sure all citizens have access to appropriate housing.

## PUBLIC & SOCIAL HOUSING

### **8.23 Labor will renew and expand Victoria's public and social housing stock.**

Labor is committed to improving access to secure, affordable and appropriate accommodation across the State for Victorians with a low income.

Labor will:

- Progressively upgrade existing public housing stock to improve amenity, configuration and energy efficiency;
- Expand the total public and social housing stock through partnerships with the private and community sector (including local government and Housing Association partnerships), and funding from the National Affordable Housing Agreement;
- Construct new social housing projects in activity centres around metropolitan Melbourne, as well as appropriate locations in regional Victoria, in a sustainable, well planned manner, and
- Renew Victoria's public housing estates by promoting regeneration, retaining levels of social housing, introducing tenure diversity to promote social inclusion.

## BUILDING COHESIVE & SUSTAINABLE COMMUNITIES

### **8.24 Labor will strengthen local communities by renewing physical and social infrastructure.**

Specifically Labor will:

- Support neighbourhood renewal strategies to create cohesive communities on public housing estates with a mix of public, private and community managed housing;
- Expand the Neighbourhood Renewal program and embed its principles into the ongoing management and operation of public housing stock;
- Achieve a better integration of public, social, private and key worker housing across our large public housing estates, with the goal of making those estates more reflective of the make-up of surrounding communities, and



- Ensure that capital investment program will create employment opportunities for public and social housing tenants.

## **ENVIRONMENTALLY SUSTAINABLE HOUSING**

### **8.25 Labor will actively promote environmentally sustainable housing, particularly in relation to public housing.**

Specifically Labor will:

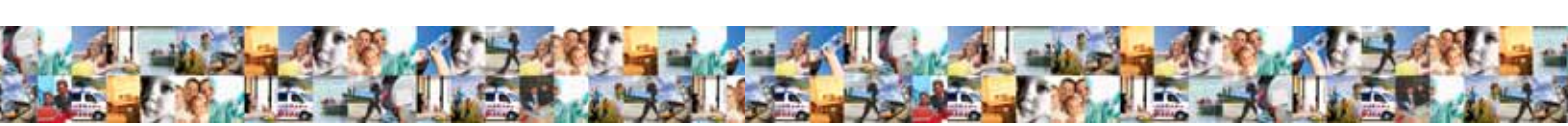
- Ensure that future social and public housing meets the national Six Star energy efficiency rating;
- Retrofit existing public and private rental housing, working in partnership with Sustainability Victoria;
- Provide assistance for low-income families to help them adopt more sustainable patterns of consumption, including trials of innovative green technologies, and
- Provide incentives for the installation of rainwater tanks and expand water conservation programs in public and social housing.

## **AFFORDABLE PRIVATE RENTAL HOUSING**

### **8.26 Labor will encourage the provision of more secure, affordable and appropriate housing in the private rental market.**

Labor will:

- Provide better consumer protection and improve the standard of rental housing through the *Residential Tenancies Act*;
- Relieve the stress in the private rental market by encouraging the construction of new affordable rental accommodation through the National Rental Affordability Scheme;
- Encourage local government to plan and develop frameworks to build and purchase affordable housing through private and community investment;
- Ensure that VicUrban promotes a range of housing choices at suitable sites in accordance with Rescode;
- Encourage the inclusion of affordable accommodation in new housing developments with funding from developer contributions, spot purchases or buy back schemes;
- Make sure properties in the private rental market meet basic standards of safety and comfort, consistent with community expectations, and
- Head Lease properties in the private rental market to provide more rental accommodation at affordable prices.



## **SPECIAL RESIDENTIAL SERVICES**

### **8.27 Labor will strengthen support for Victorians living in pension level Supported Residential Services and improve access to services for these residents.**

Labor will support the highly popular Support Accommodation for Vulnerable Victorians Initiative (SAVVI) which provides supports and improved amenity in pension level SRS.

It will implement legislation to strengthen their tenancy rights and ensure appropriate standards are provided.

## **HOME OWNERSHIP**

### **8.28 Labor will help people buy their own home, based on a needs assessment.**

To encourage home ownership Labor will:

- Assistance for First Home Owners
- Release and develop surplus Commonwealth and State land;
- Increase the supply of affordable housing through the work of the Growth Areas Authority and VicUrban to supply affordable housing;
- Support the purchasing of appropriate property by existing public housing tenants, and
- Expand the availability of housing associations for public housing tenants.

## **HOUSING FOR ABORIGINAL VICTORIANS**

### **8.29 Labor will expand the range of housing choices for Aboriginal Victorians.**

Access to safe, secure housing is widely recognised in community welfare circles as the underpinning factor to the overall wellbeing of any individual or family within any community. From a stable home environment, adults have a base from which to seek stable employment, nurture their families and provide consistent access to education for their children. A secure and safe home environment is conducive to good health and provides a haven for recuperation when necessary.

Labor will:

- Expand the opportunities for Aboriginal Victorians to manage and deliver housing programs and services;
- Facilitate the transfer of formerly Commonwealth-owned Aboriginal housing properties to state Indigenous Community Housing Organisations, in line with the preferences of those organisations, and
- Support the growth of Aboriginal Housing Victoria as a registered provider of social housing for Aboriginal Victorians.



## **YOUTH HOUSING**

### **8.30 Labor will implement the Youth Homelessness Action Plan so young people who are at risk of being homeless are able to access housing.**

Labor will provide integrated housing services linked to the educational, employment and training needs of specific groups of young people, including steps to:

- Develop housing opportunities for vulnerable young people and encourage access to health, employment and welfare services;
- Ensure that specific groups, such as homeless young people and those at risk of opting out of education and training, such as pregnant and parenting young people, have access to social housing and crisis accommodation in their communities;
- Look at ways to integrate discharge planning between homelessness services and residential institutions, and
- Provide a variety of accommodation types (family, single, shared and supported accommodation) and, particularly, housing options that are culturally sensitive to the needs of indigenous young people.

## **BUILDING STRONGER MULTICULTURAL COMMUNITIES**

### **VALUING RESPECT, CO-OPERATION & FAIRNESS**

#### **8.31 Labor celebrates Victoria's rich and diverse multicultural community and believes the strength of our community is its foundation on the values of respect, co-operation and fairness.**

Labor believes the diverse cultural backgrounds, languages and abilities of Victorians are one of our State's greatest strengths.

Labor is unequivocally opposed to the expression of intolerance in any form. Victoria is a fundamentally respectful and egalitarian society with the values of a 'fair go' and support for racial equality and equal opportunity deeply ingrained.

These values are reflected in Labor's work with the Victorian community and Labor will promote respect and co-operation as the bedrock of life in this State. We believe that good government should be based on a philosophy of inclusion.

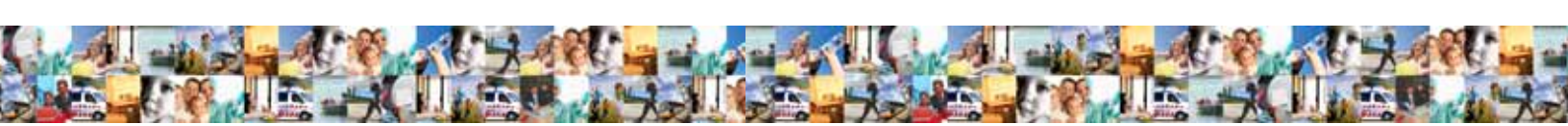
### **PROMOTING DIVERSITY & HARMONY**

#### **8.32 Labor will work to ensure Victoria remains a socially cohesive and harmonious multicultural and multi-faith society by responding to current challenges.**

Victoria has a well-earned reputation for its rich cultural, religious and linguistic diversity, its heritage of multicultural arts, festivals and events, as well as strong interfaith networks and multi-faith activities.

Labor will:

- Support programs that improve understanding and respect as well as celebrate and enhance cultural diversity, and interfaith and multicultural initiatives;



- Support targeted research that will identify unmet needs and more cost effective targeting of services and programs;
- Help grow Victoria's many vibrant multicultural festivals and events, and
- Strengthen Multicultural Arts Victoria to support multicultural communities and artists engage and promote Victoria's rich tapestry of cultures and the arts.

## CULTURAL PRECINCTS

### **8.33 Labor will work with migrant communities to develop distinctive precincts where they can make their mark, establish restaurants, create community hubs so that the unique features of their cultures can be shared with other Victorians.**

A distinctive feature of Melbourne is the existence of precincts where particular communities tend to chose to reside or establish business or restraints. The long standing precincts of Chinatown in Little Bourke St, the Greek precinct in Lonsdale St and the Italian precinct of Lygon St have been joined by many others, as more communities make their home in Victoria.

This phenomenon is not restricted to Melbourne and many regional towns are developing special relationships with particular migrant communities or developing restaurant precincts which inject diversity to their community.

## ARTS & CULTURE

The arts and culture play a pivotal role in strengthening Victoria's national and international reputation as an imaginative, enterprising, innovative and diverse state. The arts are valued for their capacity to positively impact on our lives as individuals and communities, wherever we live, whatever our age, life experience or background.

Every Victorian deserves the chance to develop their creative talents and to benefit from those of others. The arts provide depth to society – they strengthen and inspire, build social connection, and instil a sense of community pride. They improve educational outcomes for the young, and contribute to community health and wellbeing.

## ACCESS ALL AREAS

### **8.34 Labor will give all Victorians an opportunity to enjoy quality arts experiences in their local communities no matter where they live, through an 'access all areas' program.**

Labor will:

- Support the State's arts and cultural agencies to ensure diverse community access, programs for lifelong learning and employment opportunities for artists;
- Promote arts education and training opportunities at school, tertiary, community and professional levels;
- Support the expansion of arts programs across the regions, including some that are accessible outside normal working hours;
- Increase support for local and regional community festivals as well as major Melbourne arts festivals and events., and
- Support community arts programs that strengthen communities and contribute to social harmony.



## **SUBURBAN & REGIONAL ARTS**

### **8.35 Labor will ensure suburban, outer metropolitan and regional communities have opportunities to participate in local and touring arts and culture.**

Labor will:

- Ensure the work of metropolitan arts companies is shared through touring, co-productions, creative collaboration and exchange programs;
- Support the establishment and growth of suburban and regionally based cultural institutions and companies;
- Support the redevelopment and improvement of suburban and regional performing arts centres, galleries, museums and community arts facilities through partnerships with local government, and
- Support diverse arts practice in regional Victoria, celebrating and representing multicultural and indigenous communities.

## **SUPPORTIVE OF THE “SMALL”**

### **8.36 Labor will work to make more support more easily available to individual artists and smaller arts organisations.**

Labor's plan to boost Victoria's creative output will support individual artists and small to medium arts organisations to provide more employment and to better support the development of the stars of tomorrow.

Labor will:

- Encourage the exhibition of young artists, particularly electronic, digital and new media artists, at our major cultural agencies and art organisations.
- Look to established organisations as a means to distributing new accessible small-grant funding programs, and
- Actively support and strengthen the smaller-scale end of the arts sector, acknowledging its contribution at grass-roots community and sector level.

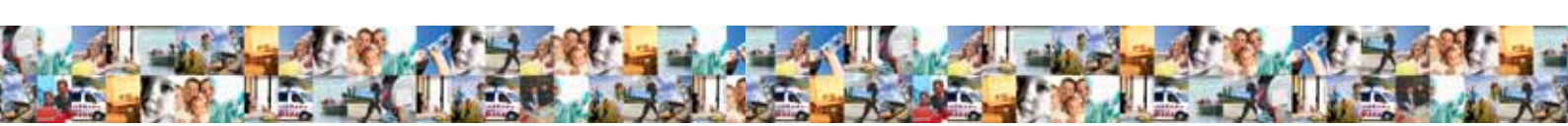
## **PROUD OF THE “LARGE”**

### **8.37 Labor will ensure that our major arts organisations and cultural institutions maintain their leading role as Australia's cultural powerhouses.**

Labor will also ensure that our leading cultural institutions and events continue to flourish and remain competitive.

Labor will:

- Support the presentation and touring of work in both metropolitan and regional areas;
- Identify and support opportunities that will expand their presence and artistic contribution nationally and internationally;
- Build on Melbourne's commercial theatre success as the preferred opening centre for



Broadway productions, and

- Support a strong Victorian College of the Arts to provide opportunities for gifted Victorians and the skills needed for our arts industries.

## WRITING

### **8.38 Labor will promote the written arts through support for writers across all forms as part of its “UNESCO City of Literature” initiative and the Wheeler Centre.**

Labor will support a diverse range of writers, a prosperous publishing industry, a successful culture of independent bookselling, a wide variety of literary organisations and a healthy culture of reading.

Labor will encourage the Wheeler Centre to:

- Capitalise on the gathering together of Victoria’s key literary organisations under its one roof, in terms of knowledge sharing, events, workshops and professional development;
- Play a co-ordinating role for literary activity across the state, centrally managing information about state-wide events and festivals;
- Facilitate international exchange and engagement within the UNESCO Creative Cities Network and other international literary organisations, and
- Work with groups like the Melbourne Vice Chancellors’ Forum and Committee for Melbourne to co-ordinate the development of Melbourne as the “Knowledge Capital”, promoting Victoria nationally and globally as Australia’s knowledge headquarters.

## FILM, TELEVISION & DIGITAL MEDIA

### **8.39 Labor will make Victoria a centre of excellence for creative industries such as film, television and digital content.**

Labor is determined to ensure our traditional skills in film and television production are retained. Labor is committed to a vibrant local film sector and will work with Film Victoria to ensure Victoria remains a competitive location for international production.

Labor will support the Australian Centre for the Moving Image, the only cultural venue in the nation dedicated to experiencing and exploring the moving image in all its forms.

## DIGITAL CONTENT

### **8.40 Labor will encourage artists to pursue partnerships with industry and capitalise on opportunities offered by digital content and the information economy.**

Labor will:

- Increase opportunities for community and cultural organisations to take advantage of new opportunities offered by multimedia, computer games and other emerging technologies, and
- Support cultural agencies and arts organisations to attract revenue opportunities through commercial and industrial applications of digital data collections.



## EMERGING ARTISTS

### 8.41 Labor will support emerging artists to develop their work.

Labor will:

- Maintain a grant assessment process including peer assessment and community and consumer evaluation to encourage innovative arts practice by individuals and small to medium arts organisations;
- Ensure appropriate representation of artists on key boards and management bodies;
- Convene regular forums between artists, companies, peak organisations, unions, community agencies and local government to review and develop policy, and
- Investigate incentives that would encourage corporate and other private arts investment as a direct stimulus to the sector.

## YOUTH ARTS & CULTURE

### 8.42 Labor will promote youth arts and culture through the Victorian Government-funded arts and cultural organisations.

Labor will:

- Place cultural diversity at the heart of youth arts and cultural policy and prioritise young people's creative partnerships in the community;
- Provide more opportunities for young people to participate in the arts and youth arts groups, wherever they live;
- Increase opportunities for young writers and explore the possibilities of new and emerging areas within the arts such as information technology and electronic arts;
- Support annual exhibitions of young people's Year 12 art, fashion, media and design portfolios, and

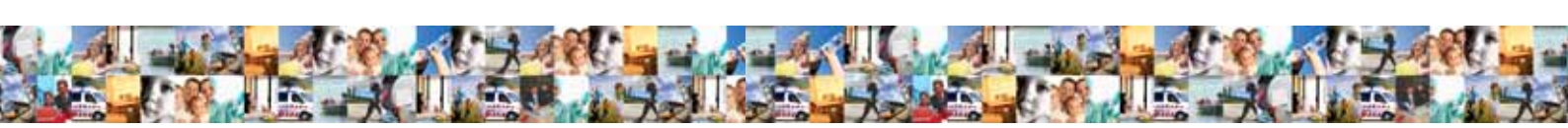
## INVESTING IN THE FUTURE

### 8.43 Labor will cement Victoria's reputation as the cultural pace setter of Australia. A vibrant creative industry sector is vital to achieve this goal.

Labor's plan for building for the future will mean that Victoria's arts organisations and infrastructure will continue to be second to none in Australia.

Labor will:

- Further develop Melbourne's internationally recognised Southbank Cultural Precinct
- Work with local governments to improve suburban and regional cultural infrastructure, including shared-used facilities and cost effective rehearsal and studio space;
- Provide organisational advice and assistance to new and emerging arts practitioners;
- Support and develop the wide range of arts practice which Victoria has become renowned for – inclusive of celebrating multicultural and indigenous communities, and
- Increase use of online content and programs by Victoria's cultural organisations.



## GROWING AUDIENCES

### **8.44 Labor’s plan for audience development will mean better opportunities for more people to participate in cultural and artistic events - so that attending the arts is an option for ever more Victorians.**

As it continues to enhance the supply of arts, Labor will also put energy into the “demand” side of the equation. Labor will implement its strategies for increasing audiences that uses the combined strength of Victoria’s arts sector and encourages “first timers” to participate in the arts or to “test drive” unfamiliar art forms.

## SPORT & RECREATION

### SPORT FOR ALL

### **8.45 Labor will encourage *Sport for All* strategies throughout Victoria as a way to meaningfully link sports and recreation for all sections of the community.**

Labor recognises the importance of sport and recreation in people’s lives and its contribution to building stronger communities.

Labor will upgrade existing sporting facilities, support community and inclusive access and the development of additional *Sport for All* assets. Government has an important role to play as a major employer and regulator of the sport and recreation industry to promote employment, career paths and pay equity to grow the professional base of the sector.

### PARTICIPATION IN SPORT & RECREATION

### **8.46 Labor will increase opportunities for participation in organised sport and physical recreation giving particular priority to providing young people with positive and enjoyable sport and recreation opportunities.**

Labor will develop partnerships with community based agencies to increase participation and generate active citizens, active communities and active cities

Involvement in physical activity is vital to our health and wellbeing. Participation at an early age can provide a basis for physical activity all through life.

Labor will:

- Reinforce codes of behaviour for spectators, coaches and participants involved in children’s sport (and ensure adult sports set a good example);
- Encourage stronger links between schools and community sporting organisations;
- Encourage family friendly clubs and organisations that provide an enjoyable environment for children’s participation, and
- Encourage achievable targets for minimum activity by both young people and adults, giving particular attention to disadvantaged groups including indigenous children.



## **ENCOURAGE SPORTING ACHIEVEMENT**

### **8.47 Labor will support the development of athletes – starting with encouraging a broad grass roots base participation and supporting elite athlete’s progression.**

Labor will:

- Provide direct support through the Victorian Institute of Sport and its regional academies and encourage private funding so as to maximise access to the high level advice and services the Institute provides;
- Promote state and regional centres of sporting excellence including the new state athletics centre at Albert Park, the new state basketball centre at Knox and the new AAMI stadium at Olympic Park as well as appropriate training facilities for athletes;
- Stage major sports events in Melbourne and rural Victoria;
- Encourage sport at the grass roots level and provide opportunities for promising athletes to progress in their sport, including exposure to national competition, and
- Make greater resources available to help build sports not represented in the mainstream media, including women’s sport and fledging sporting codes, including alternative and cross-sector forms of funding.

## **SPORT FOR PEOPLE WITH DISABILITIES**

### **8.48 Labor will increase access to sport and recreation for people with disabilities to provide the broadest possible range of sport and recreation opportunities.**

Labor will:

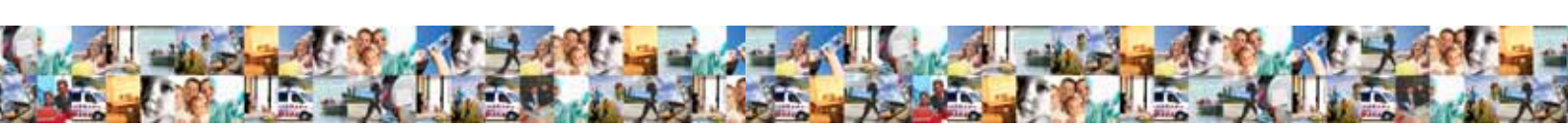
- Encourage community sport and recreation organisations to develop inclusive policies and support social inclusion;
- Ensure that community facilities are accessible to people with disabilities along with major facilities such as the MCG and MSAC, and
- Maintain support from the Victorian Institute of Sport for all athletes including those with a disability.

## **SAFETY IN SPORT & RECREATION**

### **8.49 Labor will encourage participation by promoting safe sport and recreation environments for participants and spectators.**

Labor will:

- Educate sporting organisations to reduce injuries and make participation in sport safer;
- Assist state sporting organisations to develop risk management strategies to reduce injuries as well as insurance premiums, and
- Act to minimise disruption of events by spectators and troublemakers and maximise safety for spectators.



## **SAFER BOATING & SWIMMING**

### **8.50 Labor will promote water safety messages through media campaigns and maximise participation in VicSwim programs by young Victorians to reduce drownings related to boating, swimming pools, waterways and beaches.**

Labor believes that improving boating and marine safety must be given the same priority as road safety. Labor will invest in improving safety through better boat facilities, public safety and education campaigns and search and rescue capabilities. Complementary programs will target the dangers of drowning among CALD communities and promote safer swimming.

## **WOMEN IN SPORT & RECREATION**

### **8.51 Labor is committed to increasing women's opportunity to participate in all sport and recreation opportunities and working towards the equal status of women's teams and competitions at both an elite and amateur level, in the community and the media.**

Labor will:

- Encourage girls and women to participate in sport and recreation at all levels from the grassroots through to the elite;
- Assist local sporting clubs to develop programs and activities that include girls and women including the provision of culturally diverse activities that increase opportunities for involvement;
- Work with local government and other bodies to ensure equitable access for women and women's teams to playing fields and facilities;
- Address the serious gender inequality in sports administration;
- Encourage media outlets to include more elite women's sport within their programming, and
- Assist elite women's sporting organisations to develop links and partnerships with public and private entities that can provide support and resources.

## **SEXUAL VIOLENCE & SPORT**

### **8.52 Labor condemns sexual violence or any inappropriate and derogatory behaviour towards women, lesbians and gay men, that at times exists in sporting culture and some major sporting events and supports initiatives to eradicate such behaviour.**

Labor will:

- Promote role models, positive behaviour programs and responsible codes of conduct;
- Encourage the development of guidelines and procedures for sporting clubs to effectively deal with allegations of sexual assault and discriminatory behaviour;
- Work with sporting bodies to deliver gender and violence education programs and challenging homophobia programs for sporting players, coaches, managers and promoters across all sports and levels;
- Promote the responsible consumption of alcohol in and around sporting environments, and
- Promote a positive and inclusive culture in sporting organisations.



## RESPONSIBLE GAMING

### **8.53 Labor will build on its record of tackling problem gambling and implement harm minimisation strategies including pre-commitment rules and removal of all ATM's from gaming venues**

The Government has introduced a range of substantial reforms to minimise harm for those who gamble, such as our regional caps policy which has resulted in the removal of gaming machines from vulnerable communities.

To build on this, Labor will also:

- Strengthen problem gambling services and programs and provide funding certainty;
- Provide an annual statement of how gambling taxation is spent and commit to distributing gambling taxes to vital health and community services;
- Research and develop strategies to address the underlying causes of problem gambling, including the relationship between mental health and problem gambling;
- Use in-venue problem gambling counsellors to train gaming industry staff to identify and assist problem gamblers at a local and personalised level, and
- Continue its responsible gambling public awareness campaign and ensure it remains the best researched and targeted in Australia.

### **8.54 Labor is committed to the staged introduction of pre-commitment rules which will be mandatory for all gaming machines and voluntary for players to use.**

Pre-commitment allows players to preset time or loss limits before the commencement of gambling activity.

Every player will be required to use one method of accessing the gaming machine before commencing play

This method of entry can be facilitated through current and emerging technology. The technology will ensure that a player who has chosen to pre-commit will automatically be barred from all Victorian gaming machines for the period of the pre-commitment

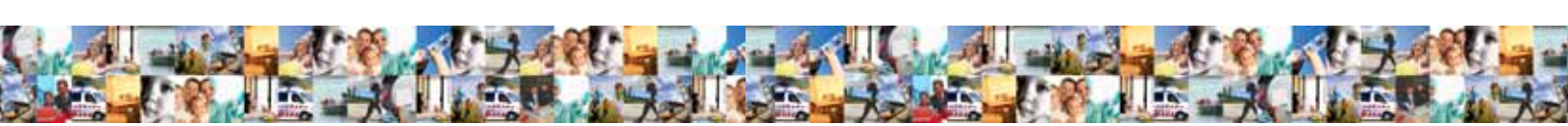
Although the decision to pre-commit will be voluntary, the rules will require each player to indicate whether he or she wishes to pre-commit. If a player does not wish to pre-commit, the player will be able to commence gambling without making a pre-commitment. However if the player chooses to pre-commit the system will recall the player's identity and will bind the player for the period of the pre-commitment.

## REGULATING THE GAMING INDUSTRY

### **8.55 Labor will reform the licensing of gaming, strengthen the regulation of the industry and ensure the gaming industry acts responsibly, responds to community concerns and contributes to their local community.**

Labor has broken the duopoly over gaming machines by implementing a structure which will transition gaming from an operator based model to a venue based model. This will ensure a greater share of gaming revenue is retained in the local community.

The Victorian community benefits because the gaming industry provides recreational and employment opportunities; is important to the growth of many regional clubs and sporting organisations, and delivers vital funding for health and charities.



To achieve this, Labor will:

- Enhance the independence of the VCGR and create a single integrated liquor and gaming regulator that provides more flexible, streamlined processes and increases efficiency as we move to a more community focused venue based model ;
- Ensure the highest standards of probity for gambling service providers and ensure transparency and accountability from the gambling sector;
- Enable effective input from stakeholders concerning gambling industry regulation, including participation on the Responsible Gambling Ministerial Advisory Council;
- Encourage community involvement through the Responsible Gambling Advocacy Centre, which will provide advice to government on community views, and
- Establish a dedicated sports betting integrity officer within the VCGR to ensure the maintenance of public confidence in the integrity of the sports betting environment.

## **THE VICTORIAN RACING INDUSTRY**

### **8.56 Labor will work with all sectors of the racing industry to further cement Victoria as the nation's premier equine breeding and racing state.**

Labor will foster greater independence for Racing Victoria Limited and encourage the industry to shape its own destiny, following the findings of the Maxsted Review. Labor will support Racing Victoria moves to consolidate and maximise the value of city racing clubs.

Labor will:

- Ensure a transparent and accountable industry through the Racing Integrity Commissioner and strengthen the governance structure of the three codes;
- Review the governance structure of the three codes to ensure the optimum arrangements are in place;
- Encourage all racing clubs to maximise their interaction with local communities and to ensure broader community access to racecourses and facilities.

Labor recognises that racing facilities are community facilities and encourages all clubs to maximise their interaction with local communities and ensure broader community access to racecourses and facilities.

Through Labor's support of the *Living Country Racing Program*, Labor will ensure that regional communities have better facilities for all to enjoy. Labor has made the largest ever funding commitment to country racing by establishing the \$86 million Regional Racing Infrastructure Fund (RRIF) in partnership with the Victorian Racing Industry, with projects that focus on infrastructure development at regional and rural racing and training venues, drought proofing and water saving projects, and ensuring racing industry occupational health and safety.